



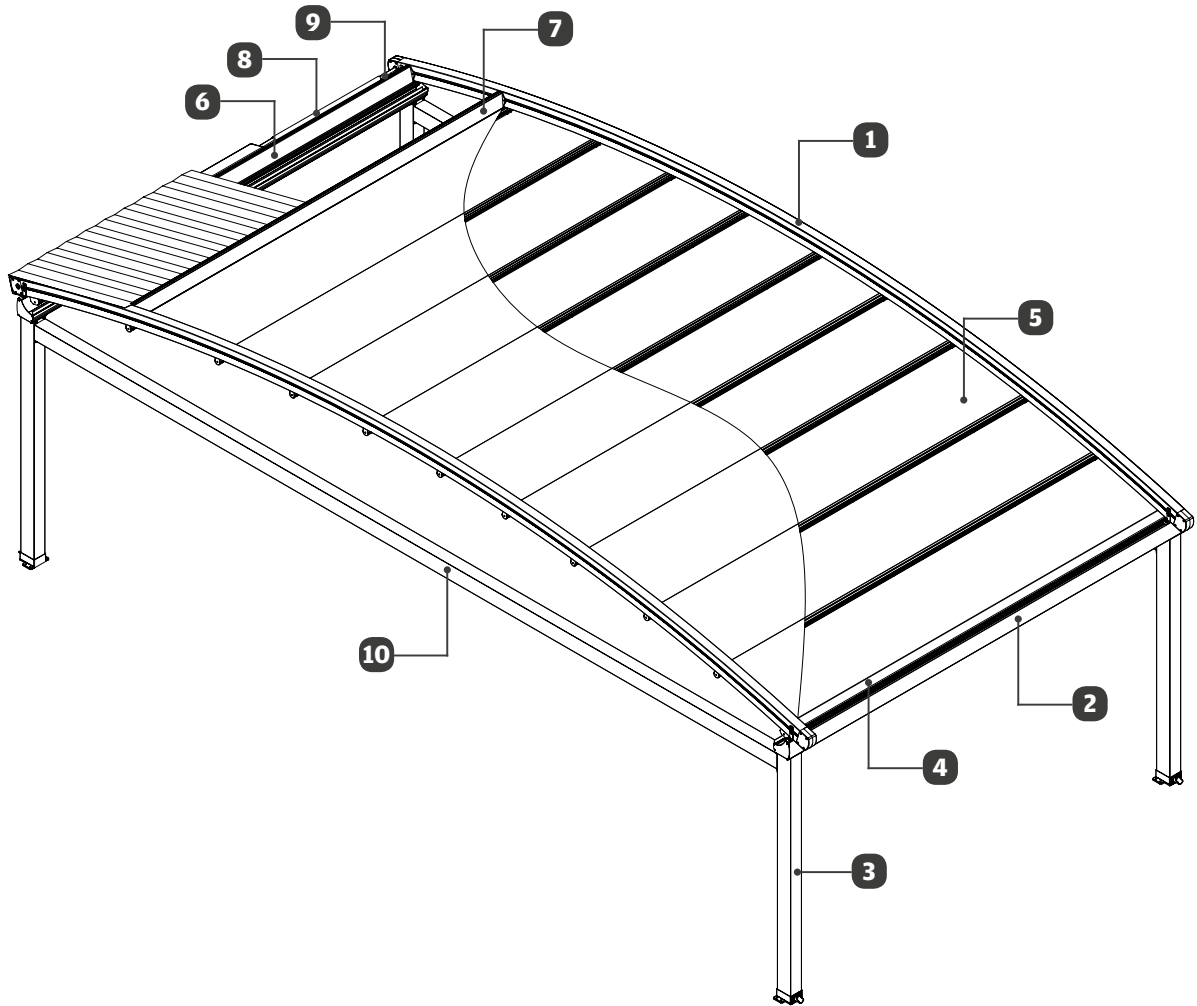
**Rising**  
Shading Systems

# UNIFOLIATE **QUERCUS MINIMA**

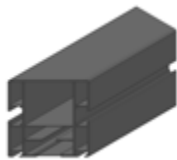
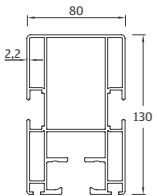
Information List

V 240318

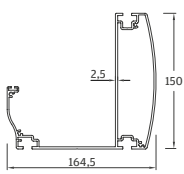




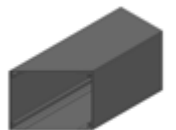
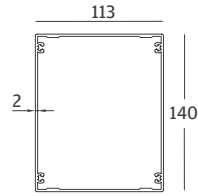
**1** Rafter Profile



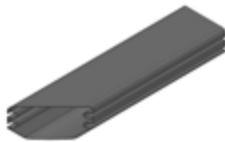
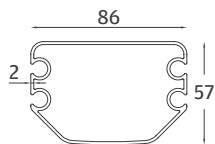
**2** Gutter Profile



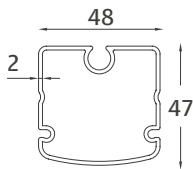
**3** Carrier Post Profile



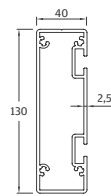
**4** Fabric Profile | Master



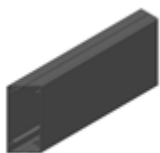
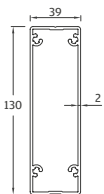
**5** Fabric Profile | Carrier



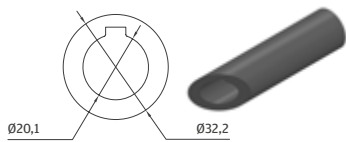
**6** Motor Box Profile



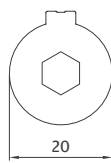
**7** Roof Sash Profile



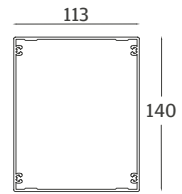
**8** Motor Shaft Pipe Profile | Thick



**9** Motor Shaft Pipe Profile | Thin



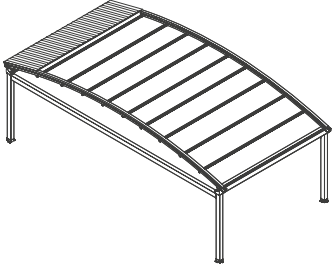
**10** Side Beam Profile



\* All dimensions shown above are in millimeters.

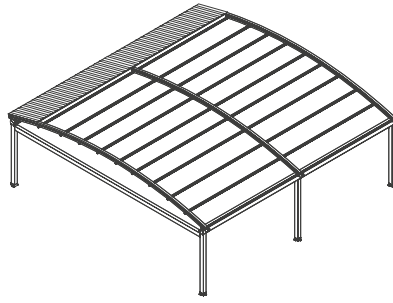
## Single Module

Max. Width as 4000  
Standard Carrier Post Profile height as 2500



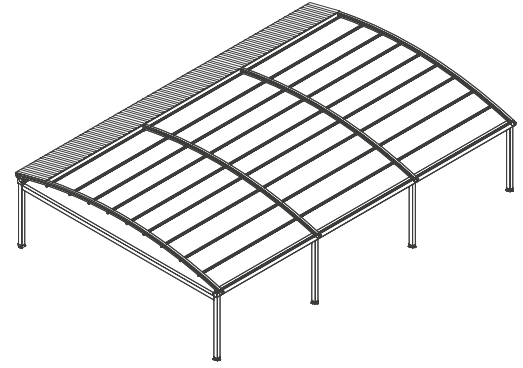
## Double Module

Max. Width as 4000  
Standard Carrier Post Profile height as 2500

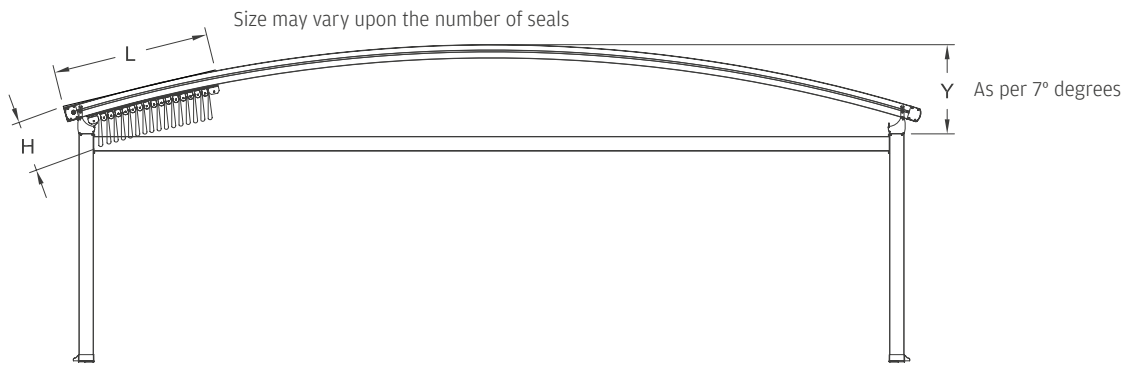


## Triple Module

Max. Width as 4000  
Standard Carrier Post Profile height as 2500



## Technical Side View



∇ Projection ^	Fabric Fall Height (H)	Hood Cover (L)	7° Degree Rule Fall Height (Y)	Fabric Profile Carrier
3000	410	660	500	8 pcs
3500	410	730	526	9 pcs
4000	410	800	561	10 pcs
4500	410	870	596	11 pcs
5000	410	940	631	12 pcs
5500	410	1010	666	13 pcs
6000	410	1080	701	14 pcs
6500	410	1150	736	15 pcs
7000	410	1220	771	16 pcs

\* Distances between fabric profiles had been calculated and measured as 50 cm and it may. Vary upon the measurement of each project therefore you are kindly requested to Contact your key account manager in order to avoid any misunderstanding other wise Rising shading systems will not be responsible for any mistakes that may occur.



Manufacturer of **Shading Systems**  
for Outdoor Spaces